



Howsham Hall

making every event special...

dine



Howsham Hall

YORK, NORTH YORKSHIRE

EXQUISITELY RESTORED

Malton 9 miles • York 14 Miles • A1 25 Miles • Harrogate 34 Miles •
Leeds 39 Miles • Leeds Bradford Airport 43 Miles
(All distances approximate)

ACCOMMODATION AND AMENITIES

- 5 formal reception rooms • Grand Staircase Hall • Bridal/Master Suite
- 11 further guest bedrooms • Billiard Room • Riverside Bar & Terrace • Balcony Lounge
- The Drawing Room accommodates up to 96 guests for a seated wedding breakfast
 - Ground floor accommodates up to 160 guests seated for formal dining
 - Grounds accommodating up to 250 guests in a marquee

Historic parkland, formal lawns, frontage and fishing rights on the River Derwent

In all approximately 80 acres (32.3 hectares)

Access for helicopter landing and approximately
20 minutes drive from the nearest private landing strip.

Howsham Hall

Howsham Hall, Howsham,
Malton, York, YO60 7PB

0345 450 4545
www.dine.co.uk





"The aesthetic is eccentric british – think Lewis Carroll meets Sir John Soane".

Lucy Denyer, The Sunday Times

THE PROPERTY

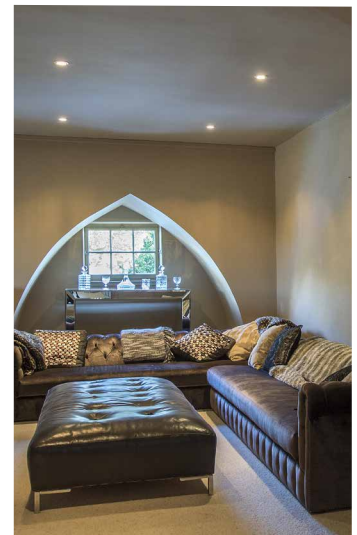
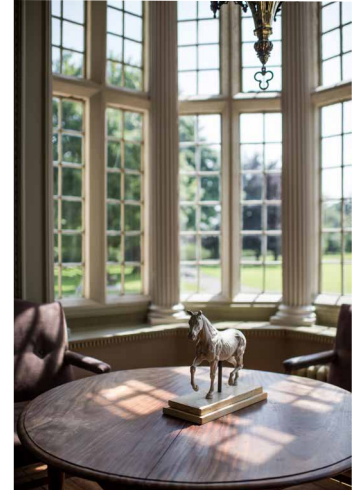


The Grade I listed Howsham Hall lies to the north east of York in a quiet, secluded valley. Originally part of a large traditional estate stretching to 11,000 acres and having been a family home for 350 years.

The property exudes architectural grandeur throughout and offers an exquisitely restored country house set in approximately 80 acres of attractive North Yorkshire countryside providing a manageable stately home. Described by Pevsner as "one of the sights of the East Riding...not extremely large, but wonderfully even and complete."

Howsham Hall has recently undergone an extensive program of refurbishment by gl50 properties, award winning specialists in country properties resulting in an exceptional venue, finished to the highest of standards. Works have been undertaken resulting in an exceptional contemporary home whilst retaining much of its historic and architectural charm.

The house is approached through two hexagonal stone Lodges with round arched gateways and rounded battlements via a private driveway leading to the impressive south façade.



Call: 0345 450 4545
Email: events@dine.co.uk

www.dine.co.uk/venues/howsham-hall



VICTORIA BAKER
WEDDINGS



LOCATION



Howsham Hall is set in rolling countryside on the edge of the pretty Yorkshire Wolds and adjacent to the small yet attractive village of Howsham. It lies 14 miles from York, with its mainline railway station with regular services to London, the fastest taking as little as 1 hour, 45 minutes. The A64 just to the north of Howsham offers access to York, and the motorway network of the M1 and M62.

The market town of Malton is 10 miles away with a diverse range of amenities including a railway station, restaurant, shops and a weekly market. Ganton Championship Golf course is 24 miles along the A64 and York Racecourse, a primary attraction is 14 miles away. Castle Howard, one of the finest houses in Europe and famous for its location in *Brideshead Revisited* stands 8 miles to the north.

HISTORY



Built by Sir William Bamburgh in c.1610, whose coat of arms are above the entrance doorway, Howsham Hall is largely of "Hi Tech" Jacobean style. The interior was subsequently remodelled in c.1775, probably by John Carr, known for his work at Chatsworth, Harewood House and Castle Howard to name a few.

For much of its history the house was in the ownership of the Cholmleys before it passed to the Strickland family who sold the estate and its contents in 1948.

The house has been converted from its institutional incarnation creating a fine, enviable country residence and has only been sold on the open market 3 times since the land was acquired in 1573.

Call: 0345 450 4545
Email: events@dine.co.uk

www.dine.co.uk/venues/howsham-hall

ACCOMMODATION



Howsham Hall offers the rare combination of exceptional formal rooms together with stylish accommodation designed for modern living.

The house is situated around a traditional central courtyard with the front door entrance porchway leading into the Great Hall, a finely proportioned state room retaining important architectural details including an arcade of Doric columns and cornicing. The Drawing Room, another fabulous reception room with Adamesque stucco frieze matches the detailed marble fireplace.

Adjacent to the Great Hall is the Grand Staircase, which rises up to the first floor supported by Tuscan columns. Accessed from here, is the Morning Room featuring early eighteenth century woodwork by Thornton of York and beautifully detailed cornicing. The fireplaces throughout the property are an additional feature of exceptionally high quality.



"We just wanted to thank you for all your help in putting together such a wonderful wedding event last weekend. We couldn't have wished for more friendly or efficient staff and the quality of food was excellent and beautifully presented. All in all Dine did an amazing job and I'm very aware of the huge part you played in the day, so very many thanks"

- Rosemary & Alan



"Period features such as the huge stone fireplaces and elaborate cornicing have been retained, while the background has been kept muted with tasteful Farrow and Ball colours".

The Sunday Times Property Section



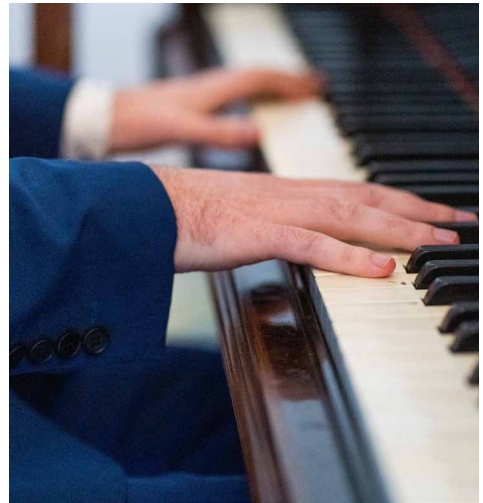
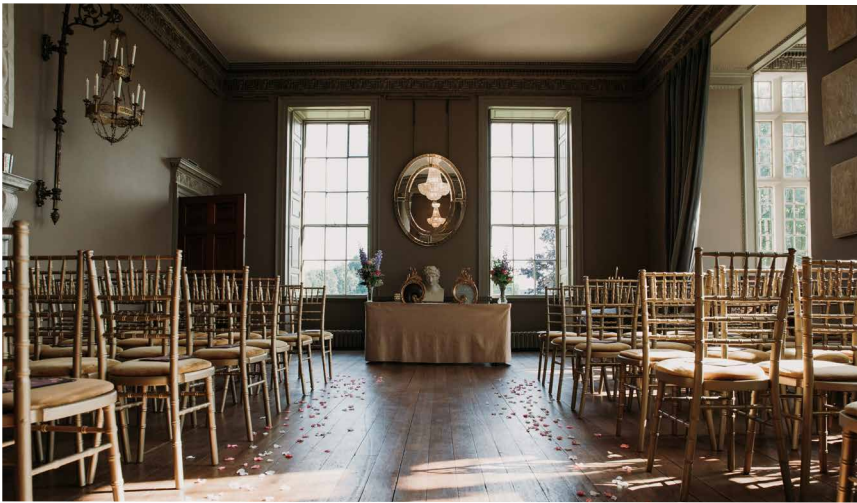


EVENT SPACES



Howsham Hall offers an array of beautifully appointed and luxuriously furnished rooms, all of which can be used to create the perfect setting for your event:

The Great Hall is truly magnificent, with original polished wood flooring and a beautiful working fireplace, it leads directly out onto the South Lawn. It is licenced for Civil Ceremonies or alternatively can be used as a private lounge.



The Great Hall leads into the **Drawing Room**, which as the largest room in the house is the main room for dinners and wedding breakfasts. Both the Great Hall and Drawing Room are south facing and have large windows, which maximise daylight and of course the fine countryside views.



The Riverside Bar and Terrace offer the ideal area for post dinner drinks and evening receptions, with plenty of casual seating and a smart dancefloor area. Along with this, the secluded terrace has fabulous views of the river and countryside beyond.



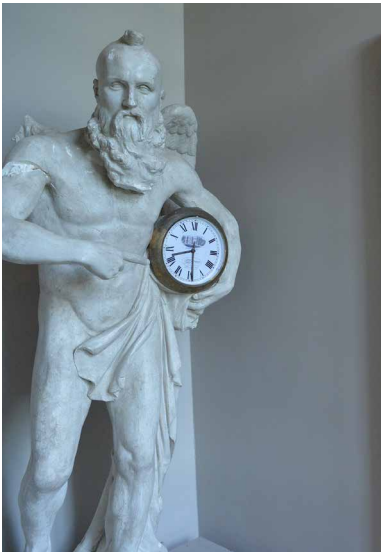
The Billiard Room, complete with full size billiard table is an ideal backdrop for pre-ceremony drinks for the Groom and his entourage. This room opens out to the West Lawns by the River Derwent.

The Morning Room is an intimate space for smaller parties of up to 20 guests, and is situated just off the **House Kitchen**, which can be available for use depending on the length and nature of your event.



The Grounds of Howsham Hall offer the perfect location for larger marquee events, with beautiful private lawns and riverside views. The gardens are also available and are ideal for hosting drinks receptions or team building activities.

Please do speak with a member of our team who will guide you through the best spaces to use for your bespoke event.

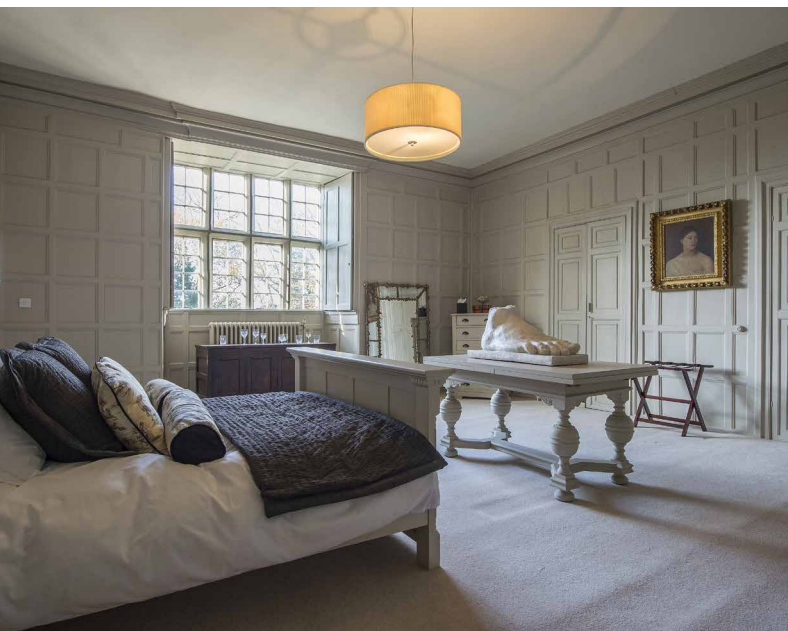






"We just wanted to thank you for all your help in putting together such a wonderful wedding event last weekend. We couldn't have wished for more friendly or efficient staff and the quality of food was excellent and beautifully presented. All in all Dine did an amazing job and I'm very aware of the huge part you played in the day, so very many thanks"

- Rosemary & Alan



BEDROOMS



There are 12 bedrooms in total available for guest use, which include two family suites (one with adjoining twin room). The remaining rooms are all en-suite and offer extremely high quality accommodation, most with the option of being double or twin bedrooms.

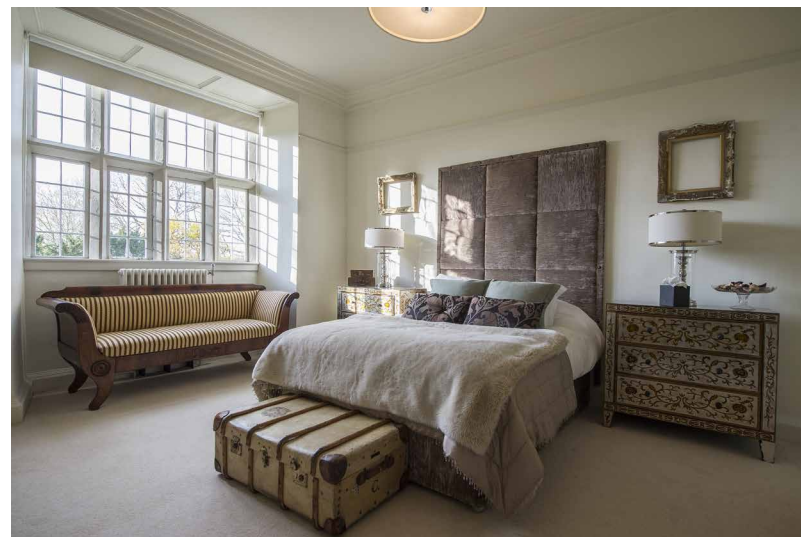
The hire of bedrooms is flexible, with packages for some or all of the rooms depending on your requirements. On peak dates during high season all bedrooms are included within the hire tariff.

Full complimentary breakfast is included for all guests staying at Howsham Hall overnight.

Call: 0345 450 4545

Email: events@dine.co.uk

www.dine.co.uk/venues/howsham-hall



"I just wanted to say a massive thank you for all your hard work at the weekend - Ginnie & Paul were blown away with everything and I still can't quite believe that it all went to plan! You were brilliant at keeping everyone and everything in check and ensuring all ran smoothly on the day, food was fabulous, staff were friendly and helpful so couldn't have gone better."

- Claire





DINE EVENTS & CATERING



Viewing

We highly recommend viewing this stunning venue before booking your event - a great opportunity to meet the team and to explore the beautiful rooms that make up this unique property.

Team

Our team have been delivering exceptional events for 20 years and have a combined experience in providing hospitality of the highest quality.

Event Planning

You will be provided with a dedicated Event Manager to plan your celebration; on hand to answer any questions you may have on the lead up to your event, they will take care of any request you may have to ensure your event is truly unique and special.

Menus

Choose from our menu options for your event or work with our team to create a bespoke, Dine Collection menu.

Services

We offer a butler service on request and provide full event management support from concept to completion, so you don't need to worry about the details - we will take care of everything for you.

Pricing

Prices vary depending on seasonality and the specific requests of the individual client. Please get in touch with our team to discuss your options in more detail.

OUTSIDE



Situated in a quiet, secluded valley 14 miles north east of York, the property comprises in the region of 80 acres. The grounds are dominated by beautiful formal lawns extending to over 10 acres, emphasising the unique parkland setting of the Hall and its relationship to the surrounding countryside. The level main lawn to the front of the house has been prepared for cricket for nearly 50 seasons and the grounds to the west hide insights into the past, with the remains of the original ice house, boat house and folly.

There is river frontage for approximately 0.5 miles to the Derwent including fishing rights and the opportunity to moor a boat. There are approximately 68 acres of pastureland to the south west.



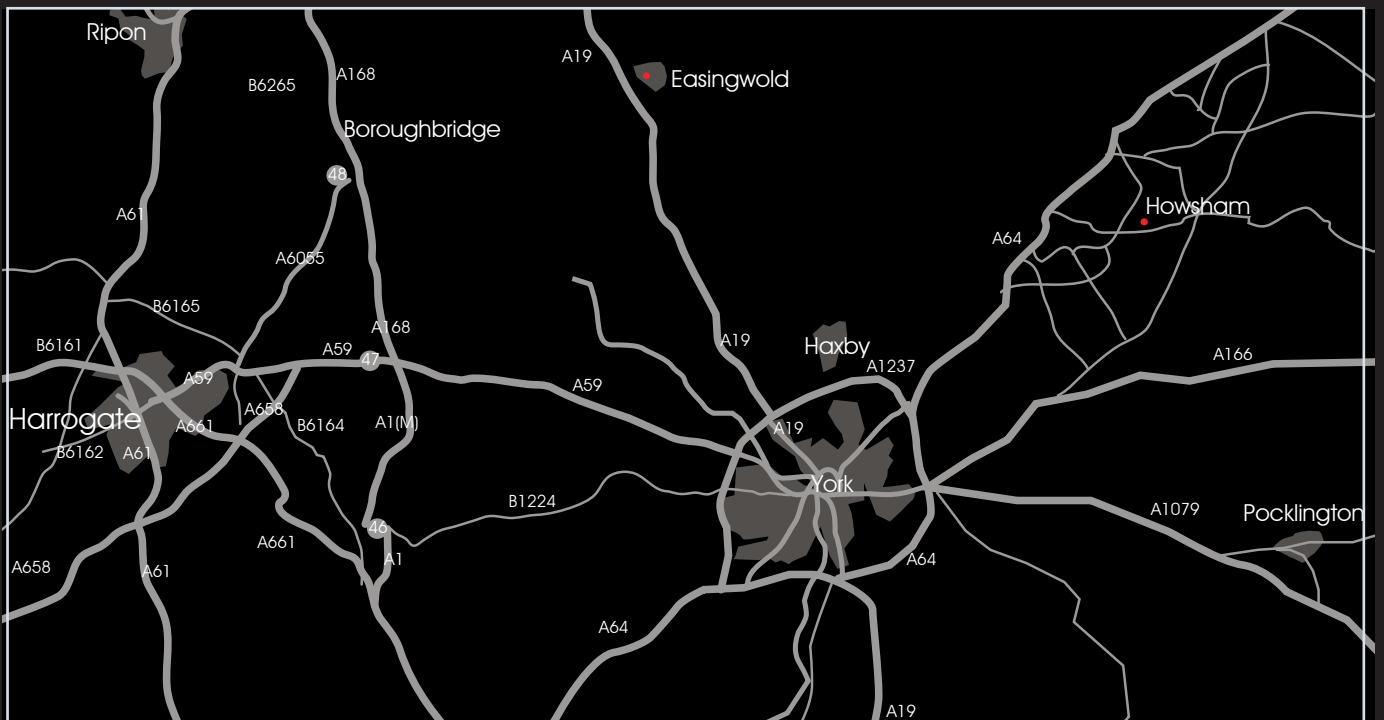
Call: 0345 450 4545
Email: events@dine.co.uk

www.dine.co.uk/venues/howsham-hall





Jane Beadnell Photography - featured in Unveiled Magazine - Caroline Castiglione gown



These plans are for guidance only and must not be relied upon as a statement of fact. Attention is drawn to the Important Notice.

Howsham Hall

Howsham Hall, Howsham,
Malton, York, YO60 7PB

0345 450 4545
www.dine.co.uk

